



The Christ Candle

March 2025

Inside This Issue

Birthdays / Upcoming Events

News / Information

Church Council / Finance

Calendar / Worship

Assistant Schedule

Easter Garden Order Form



CLC Staff

The Reverend Dale M. Zylstra
Kelly Seitzinger - Secretary
Abigayle Kubiak - Organist

Congregation Council Officers

- President

Don Winston - Vice-President
Jan Kopischke - Secretary
Kelly Seitzinger - Treasurer
Dara Kubiak - Financial Secretary

Council Members

Mike Vidimos	Bob Talley
Dave Holeman	Sylvia Ellman
Elden LaHayne	Robin Bellamy
Art Cimnovski	Sara Whitelaw
Kathy Lord	

Ministry Team Leaders

Worship & Music Director—
Jan Kopischke
Choir Director—Lori Zylstra
JuBellation Director—Judy Rodgers
Genesis Bells Director—
Jan Kopischke

Fellowship - Esther Fuehrer
Finance/Stewardship -
Social Outreach- Julie Vidimos
Property - Don Winston
Christian Ed - Robin Bellamy
SCS Superintendent - Kelly Seitzinger
Visitation - Rosemary Wignall
Worship & Music - Judy Rodgers
Youth Ministry - Robin Bellamy

**All meetings are open to members
of the congregation.
Scheduled meetings are sometimes
adjusted based upon the ministry
team members schedules.

CHRIST LUTHERAN CHURCH

~ An E.L.C.A. Congregation ~

**7051 Indianapolis Blvd,
Hammond, IN 46324**

The Reverend Dale M. Zylstra

**The Reverend James T. Swanson,
Pastor Emeritus**

Phone: (219) 844-6122

Website: clchammond.com

Office Email: office.clch@gmail.com

Pastor's Email: pastor.clch@gmail.com



Mark Your Calendar Dates to Remember!



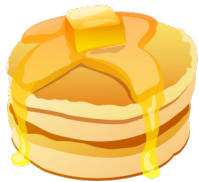
- Mar 04 - Shrove Tuesday
Pancake Dinner
- Mar 05 - Ash Wednesday
- Mar 12 - Lenten Midweek Services
Begin
- April 09 - Lenten Midweek Services
End



Shrove Tuesday Pancake Supper

Our traditional Shrove Tuesday supper will be on **Tuesday, March 4, from 6 –8 p.m. in Byquist Hall** and will feature Pancakes, Eggs & Sausage.

There will be a freewill offering collected. This is a great family event, and requires lots of hands. If you can assist in some way, please talk to someone in the Men's Group.



YOUTH GROUP

For 6th - 12th Graders

Mar 9th—5-7pm

Please Bring Your Friends!!

If you need a ride please call, we will get you there!

Please see Robin Bellamy for more information.



Highland Community Band Spring Concert

Thursday March 20, 2025 at 7:00 p.m.

Come join us for a free performance by the Highland Community Band! We have several members that play in the band! Performance will be held at Highland Highschool.



Check out our website.

**Visit us at:
clchammond.com**



Go to YouTube.com and Search:

**Christ Lutheran
Hammond IN**



Find me on

facebook

If we haven't found you yet...check us out on Facebook!!!

Search: Christ Lutheran Church Hammond

Ash Wednesday Worship - Mar 5th - 10:30am & 7:00pm

SAVIOR SERVANT FRIEND

SERVICES FOR LENT

Midweek Worship begins - Mar 12th - 10:30am & 7:00pm

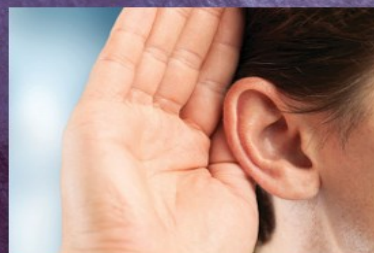
(Soup served following the 10:30am service)



Ash Wednesday
FORGIVER



Week 1
HEALER



Week 2
LISTENER



Week 3
ENCOURAGER



Week 4
PROTECTOR



Week 5
COMFORTER

*I have called you friends, for all that I have heard
from my Father I have made known to you.
John 15:15*

SAVIOR SERVANT FRIEND

SERVICES FOR LENT

Lent provides us with a perfect chance to explore the extraordinary attributes of our Savior, Servant, and Friend, Jesus. It is a time to marvel at the many blessings we received when he laid down his life for us on the cross and then rose victorious from the grave. Each service in this series dwells upon a different aspect of our greatest Friend and what each characteristic means to us as his followers and friends.

Ash Wednesday • Forgiver

Jesus forgives us again and again, even though we do not deserve it.

Week 1 • Healer

Jesus heals us when we are wounded and weakened by sin.

Week 2 • Listener

Jesus listens to us like no other and answers our questions and concerns.

Week 3 • Encourager

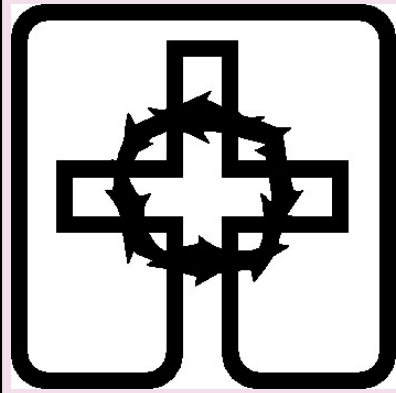
Jesus encourages us in our faith to live our life for him.

Week 4 • Protector

Jesus protects us from the devil and from danger and keeps us safe in him.

Week 5 • Comforter

Jesus comforts us in struggles and sorrows that we might find rest in his promises.



+ The Season of Lent +

For Lutherans the 40-day season of Lent is an important one. Though the Scriptures do not mention Lent, it has a longstanding tradition in the Church. It began very simply as a time of preparation for Easter. The earliest reference to a 40 day fast leading up to Easter is the Second Festal letter of Athanasius in 330 A.D. Today Lent begins on Ash Wednesday and ends on Holy Saturday (Sundays are excluded to preserve the number 40). For Christians living in the Fourth Century, Lent had two major emphases: (1) It was seen as a time of repentance and denial of self. All Christians were to examine their lives according to the Ten Commandments and other Christian ethical precepts and repent where necessary. They were to remember what it cost their Savior to save them; (2) it was a time of instruction and preparation for the catechumens who wanted to become members of the Christian Church.

At the time of the Reformation, some Christians wanted to eliminate Lent since Scripture didn't command it. Luther urged that it be kept, for he saw Lent as an opportunity for the strengthening of faith. Luther tells us that Lent should be preserved, in part, because it reminded Christians of the Passion (Suffering and Death) of Jesus and encouraged them to meditate upon it. However, no one should be forced to participate. It should be voluntary.

So we also retain Lent to this day, because we see it as a salutary outward discipline that gives Christians a wonderful opportunity for spiritual renewal. Our observance of Lent combines many of the above features. Through our midweek and Sunday services, our Bible studies, and Lenten devotional materials, we come face to face with whatever sin may be hindering our walk with Christ. But most profoundly, we come face to face with the Gospel of Jesus which forgives and removes that sin and gives us the power to live anew.

10:30AM Lenten Midweek Worship **“Savior, Servant, Friend”**

Is a special series of Mid-Week Lay Leader Services
for the season of Lent.

Beginning on Wednesday, March 12 - April 9 in Byquist.

(Soup to follow)

7PM Lenten Midweek Worship - “Holden Evening Prayer”

Mid-Week Services Each Wednesday evening in Lent
“Holden Evening Prayer” by Marty Haugen

Beginning on Wednesday, March 12 - April 9 in the Sanctuary

March 2025

Sun	Mon	Tue	Wed	Thu	Fri	Sat
2 Transfiguration 9am SCS, Confirmation & Adult Ed 10:30am Worship 12:30pm Worship & Music Mtg.	3	4 6-8pm Shrove Tuesday Pancake Supper	5 10:30am Ash Wednesday Worship 7:00pm Ash Wednesday Worship 	6 6:15pm Genesis 7:00pm JuBellation 8:00pm Choir	7	8  Hall Rental
9 Lent 1 9am SCS, Confirmation & Adult Ed 10:30am Worship 5pm Youth Group	10 7:00pm Council	11	12 10:30am Lenten Midweek Worship 7:00pm Lenten Midweek Worship	13 6:15pm Genesis 7:00pm JuBellation 8:00pm Choir	14	15
16 Lent 2 9am SCS, Confirmation & Adult Ed 10:30am Worship 12:30pm Christian Ed Mtg.		18	19 10:30am Lenten Midweek Worship 7:00pm Lenten Midweek Worship	20 6:15pm Genesis 7:00pm JuBellation 8:00pm Choir	21	22 Hall Rental
23 Lent 3 9am SCS, Confirmation & Adult Ed 10:30am Worship	24	25	26 10:30am Lenten Midweek Worship 7:00pm Lenten Midweek Worship	27 6:15pm Genesis 7:00pm JuBellation 8:00pm Choir	28	29 Hall Rental
30 Lent 4 9am SCS, Confirmation & Adult Ed 10:30am Worship	31	1	2 10:30am Lenten Midweek Worship 7:00pm Lenten Midweek Worship	3 6:15pm Genesis 7:00pm JuBellation 8:00pm Choir	4	5



2025 EASTER GARDEN



Flower orders are now being received.
Don't be disappointed,
order yours today!!

COST: \$10.00 per Plant

Orders due by: Sunday, April 13th

(In order that names are correct, please print)

Your Name: _____

Envelope # _____ Phone: _____

Given in Memory of: _____

And/Or

Given in Honor of: _____

Amount of Money Enclosed At \$10.00 per Plant: \$ _____

Check which plants apply:

(Please give quantity if ordering more than one type of plant)

_____ Easter Lilies # _____ Tulips # _____ Hyacinths

_____ I will take home after LATE Service (Easter Day)

_____ I will leave for Easter Season and Planting on Church grounds.